

A



**Youth Exchange
"The Magic of Believing"**

20.-29.09.2024.

Garlstedt, Germany



About The Project

“The Magic of Believing” is going to be a youth exchange organized in Osterholz-Scharmbeck in Germany which will include 36 young people and group leaders from 6 different countries: Spain, Croatia, Portugal, Hungary, N.Macedonia and Germany.

Age of participants: 18–30 years old, 18+ for the group leaders

Country group size: 6 including 1 group leader (5+1)

Place: Garlstedt, Osterholz-Scharmbeck, Germany

Venue: KulturHaus, group house

Days of activity: 10 days (including 2 traveling days)

Dates: 20. – 29. September 2024.



Partner Organizations



Spain – Brisa Intercultural



Croatia – Eat Different



Hungary – Square of Youth Association



N. Macedonia – Go Green Skopje



Portugal – RUA NGO

WELCOME MESSAGE

Dear participants, we are very happy to welcome you in Germany on our youth exchange. We will do our best to make a space where we can learn about the topic of our exchange and also have fun while doing that.

In this info pack you are going to find:

- Project info and goals of the project
- Profile of the participants
- Travel info
- Location and the venue
- Preparation info
- Insurance and other info
- Confirmation of participation



Info About Project

With this project, we want to address the topic of youth activism and to empower young people to become active members of their community, find something they care about and make a change about it.

The main activity of the project, youth exchange „The Magic of Believing” will bring together 36 young people from 6 different countries to share their realities, their passions and to inspire each other. Through different forms of art, they will learn how to express themselves and they will get knowledge and tools that can help them make a difference inside our society.

Objectives:

1

Creating a space for sharing ideas, views and opinions with young people from different countries

4

Addressing the lack of activism among some young people, motivating them to find a topic they care about and to get more active

2

Giving tools to youth from 6 different countries, empowering them to make a change in their local community

5

Showing how different forms of art can be used for expressing ourselves and raising awareness about important social topics

3

Showing good examples of youth activism from the participating countries and inspiring each other

6

Informing young people about non formal learning opportunities through the Erasmus + and ESC programs

Participant Profile



1. Between 18-30 years old, 18+ for group leaders
2. Residents of one of the participating countries
3. Interested in topics of youth activism and different types of art (storytelling, theater, poetry, etc.)
4. Willingness to be part of multi-cultural group
5. Participants don't need to have good knowledge in English, but group leaders should be able to communicate in English
6. Previous experience in Erasmus+ is not required but participants should show initiative for learning new things and working with other young people
7. Group leaders should be youth workers or youth leaders that are active in your organization and/or are experienced in Erasmus+ programme.

Travel to/from Germany

Important info regarding travel to and from the exchange

1. Please confirm your flights with us before booking them. You should buy your tickets after our confirmation.
2. ARRIVAL DAY (20.09.2024.) You should be in Bremen latest until 19:00 on this day. This is when the last bus goes from Bremen to our venue. Please take this into consideration when booking tickets.
3. DEPARTURE DAY (29.09.2024.): Due to limited bus schedule, all participants will need to leave the house with the bus at 09:0 and you will be in Bremen around 10:00. Keep that in mind while planning your trip back home.
4. According to the rules from the National Agency in Germany, it is acceptable to come to Germany maximum 3 days before the activity and to stay in Germany maximum 3 days after the activity.
5. Look for travel options to the following airports: Bremen, Hamburg, Hannover, Dortmund, Dusseldorf or Cologne. You can take a train or bus from these cities to Bremen (2-3 hours by train). Please try to find the most affordable travel option possible.

IMPORTANT: •

Travel costs are refundable for participants who attend all sessions, commit themselves fully to the activities and provide all original tickets, invoices, boarding passes and emails relating to their travel. The participants should participate also in the dissemination phase.

Travel to/from Germany

Important info regarding travel to and from the exchange

1. Don't throw any ticket or boarding pass. You will need to send all of them after the activity. If you lose any of the tickets or boarding passes, we won't be able to reimburse you for them.
2. On Erasmus+ projects, there is maximum amount that can be reimbursed for the travel of participants, according to the distance from your country to the city where the seminar is being organized. If your tickets cost more than that amount, you are responsible for covering the difference as Erasmus+ is co-financing program.
3. To know the maximum travel costs that can be reimbursed for your trip, please use the distance calculator and calculate the distance between your home town and Garlstedt (Osterholz-Scharmbeck) where the activity will take place. You can check the distance on this link: https://ec.europa.eu/programmes/erasmus-plus/resources/distance-calculator_en

On the right side, you can see the amounts depending on the travel distance. If you are using plane in any part of your trip, you should check the Non-Green travel amounts.

If you are not sure about the calculated distance and amounts, you can contact your sending organization or us for help.

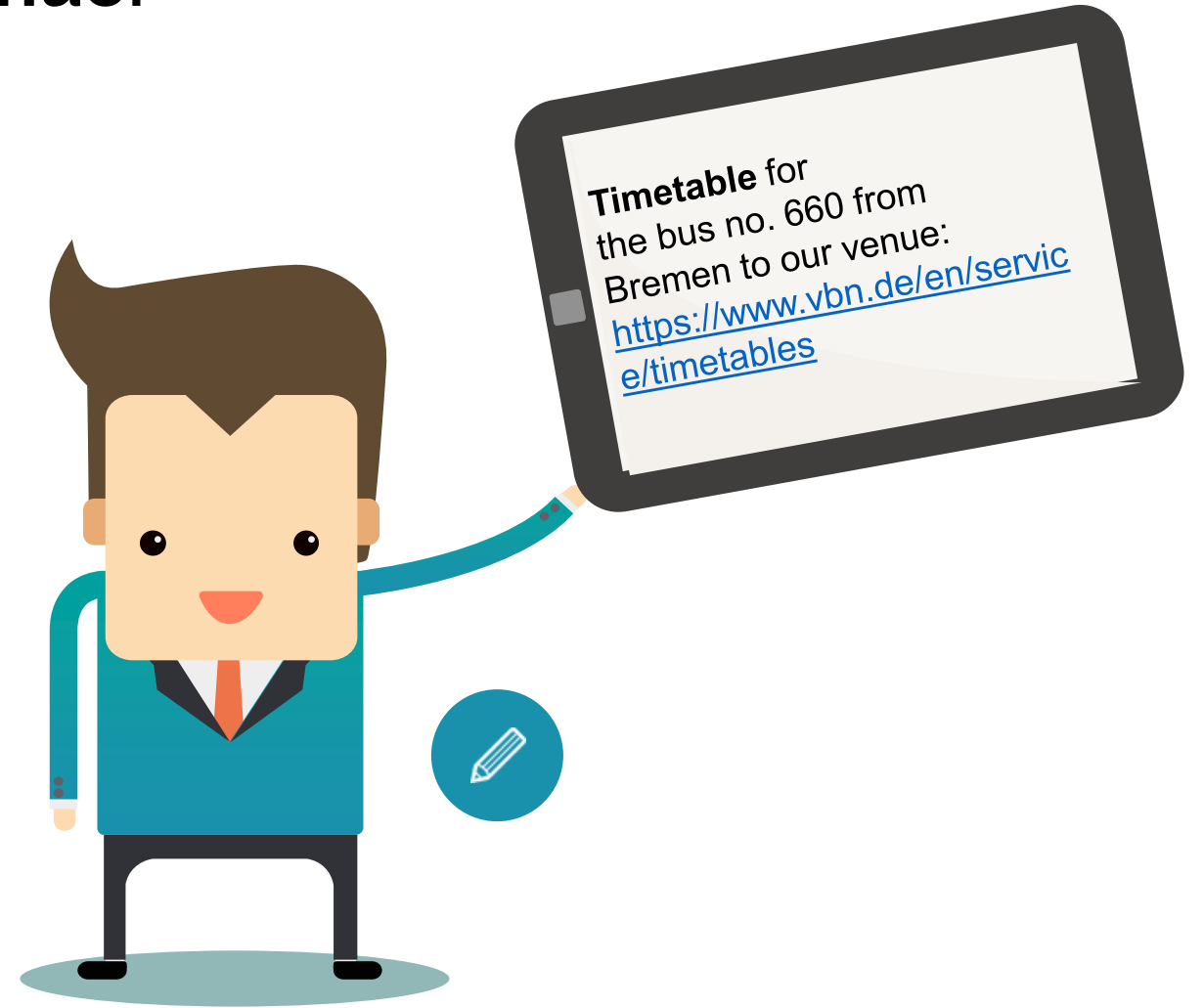
Here are the maximum travel costs for the projects in Erasmus+, according to the distance:

Travel distance	Green travel	Non-Green travel
10 – 99 km	56 EUR	28 EUR
100 – 499 km	285 EUR	211 EUR
500 – 1999 km	417 EUR	309 EUR
2000 – 2999 km	535 EUR	395 EUR
3000 – 3999 km	785 EUR	580EUR
4000 – 7999 km	1188 EUR	1188 EUR
8000 km or more	1735 EUR	1735 EUR

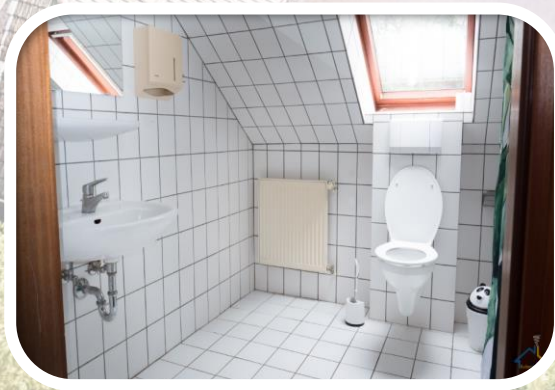
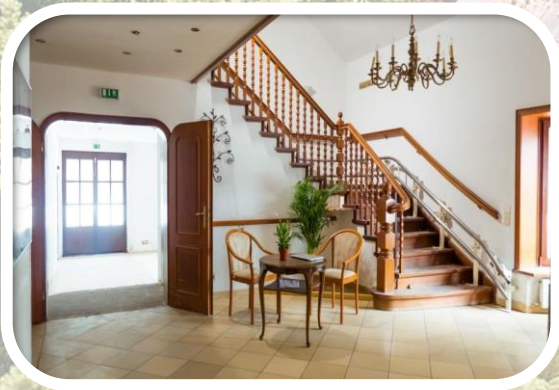
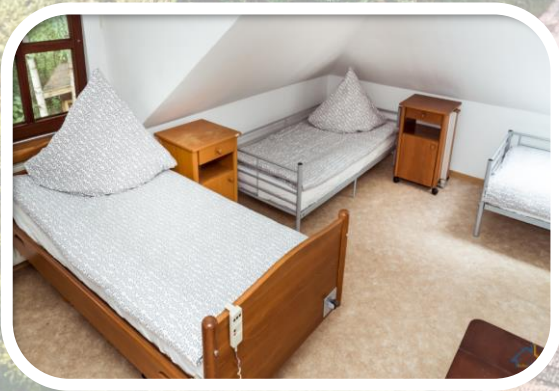
Location – how to reach our venue:



- The village where the mobility is taking place is called **Garlstedt**. The nearest city is Bremen and from Bremen to our venue you will need to use public transportation (**bus number 660**)
- The bus departs from **bus stop “J”** that you can find close to the Bremen train station entrance.
- Our bus stop is called **OHZ-GARLSTEDT, BW LOGISTIKSCHULE**.
- You should **take one of the last two buses** from Bremen (**at 17:35 or 19:00**). Someone from our team will wait for you at the bus stop.
- The ticket costs **6,90 euros** and you are buying it from the bus driver. You can **pay only in cash** so make sure that you have some euros with you
- Only for the ones **arriving after 19:00 to Bremen**: You will have to take a more complex travel option. **Contact us** for supporting you in finding your way.



THE VENUE



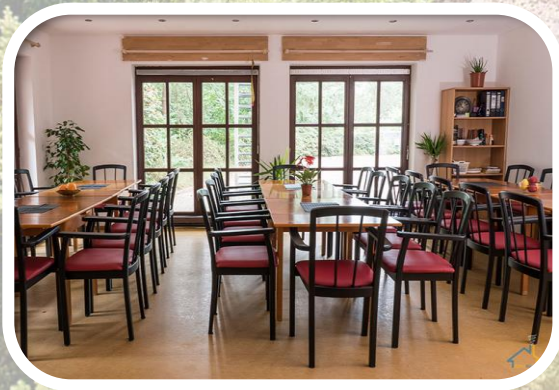
We will be accommodated in a group house in a village Garlstedt, close to the city of Bremen, Germany.

The accommodation will be simple. Participants will be sharing rooms with 3-4 people from same gender but different nationalities. Some of the rooms are with private and some with shared bathrooms.

Some of the features of the house:

- It is almost in middle of nowhere. Cafes, discos, restaurants and supermarkets are not that close.
- We will be the only group in the house. We will learn and have fun together, cook and eat together and share our culture and ideas. We'll make the rules together and respect the rules that we make.
- In the venue where we will stay, there is rule of **inside shoes**. This means that every participant should **bring slippers** or some shoes that you are going to use only inside the house.

THE VENUE



- You should bring your own towels to the mobility. Bedsheets will be provided by the venue where we will stay.
- There is washing machine available in the venue. It costs 2 euro for using the washing machine and 2 euros for using drying machine.
- There are several hair dryers available in the venue and should be shared by the whole group.
- We have hired our own cooking and logistics team, they will make sure that nice and healthy food will be done, including for the people with food preferences – vegetarians, no pork etc. Please note that we cannot provide HALAL or fruitarian food. If you have any concerns about your diet, please contact us.
- The address of our venue is: Hinterm Horn 5, 27711 Garlstedt, Osterholz-Scharmbeck, Germany

You can find more information and photos about the venue here:

<https://kulturgruppenhaus.de/en/new-home-2/>
<https://www.facebook.com/KulturGruppenHaus/>

Intercultural evening / Research about youth activism

➔ **National evenings** - Each national team will have the chance to present their culture one evening. You can bring some national food and drinks that you would love to show to the rest of the group.

➔ **Research about youth activism** - You should make a research about examples of youth activism in your country, what are good practices and also challenges that youth activists are facing



What to bring with you

1. Health insurance - don't forget to bring your European Health Insurance Card if you are from EU country or other type of insurance if you're not from the EU.
2. All tickets, boarding passes - don't throw any of them, you will need to send them to us after the exchange. If you lose any of the tickets or boarding passes, we won't be able to reimburse you for those tickets.
3. Inside shoes, slippers or other shoes that you will use only inside the house.
4. Towels and toiletry including any medication that you are using
5. Passport or ID card, money if you want to buy souvenirs, etc.
6. Food and materials for your national evening - as explained in the previous section.





Insurance and other info

Insurance - All participants from European Union countries need to bring their European Health Insurance Card (EHIC) with them. You can get it for free in your country and it is amazingly useful for you whenever you travel outside of your country. Participants coming from outside of the EU should acquire travel insurance. NaturKultur can cover your costs for insurance up to 15 euros (**only for participants from non-EU countries**) so please take that in mind while purchasing insurance.

Consumption of alcohol – Please be aware that on our seminars the focus is on learning, and we ask from all our participants to be responsible and moderate while consuming alcohol. If someone will have excessive alcohol consumption that will influence their participation, we keep the right to introduce „NO ALCOHOL POLICY”. Apply only if you agree with this rule.

Facebook group - To make the communication easier, we have created a Facebook group. Everyone who has Facebook should join this group because we will use it for communication between each other, sharing materials and getting to know each other: The link will be shared with you after you have been selected.

Confirmation of participation

We are also sharing the Confirmation of Participation.

Read this document and apply only if you agree to everything written in it. On the first day of the activity, every participant will need to sign this document.

I, _____ (your name) confirm my participation in the above-mentioned project:

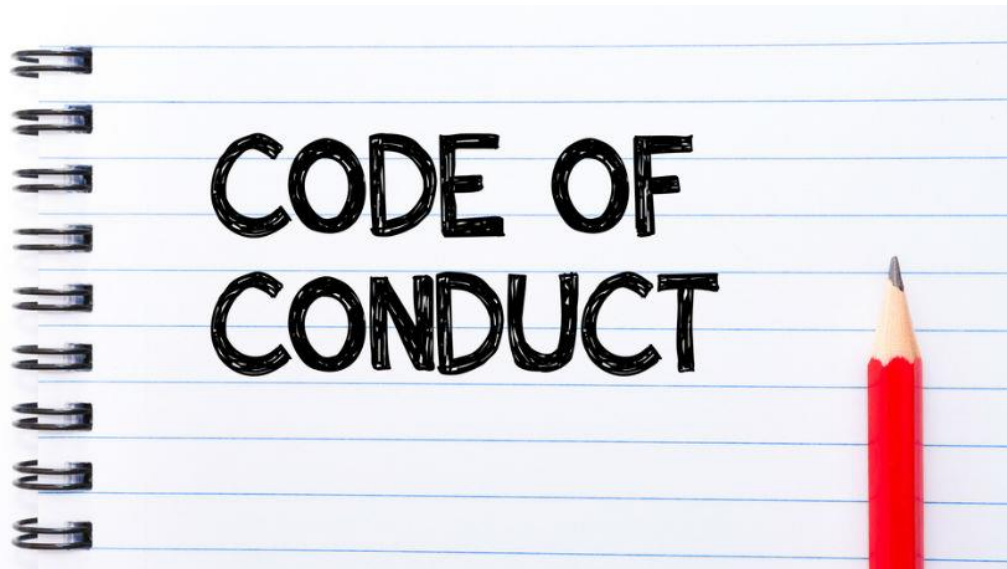
I also confirm:

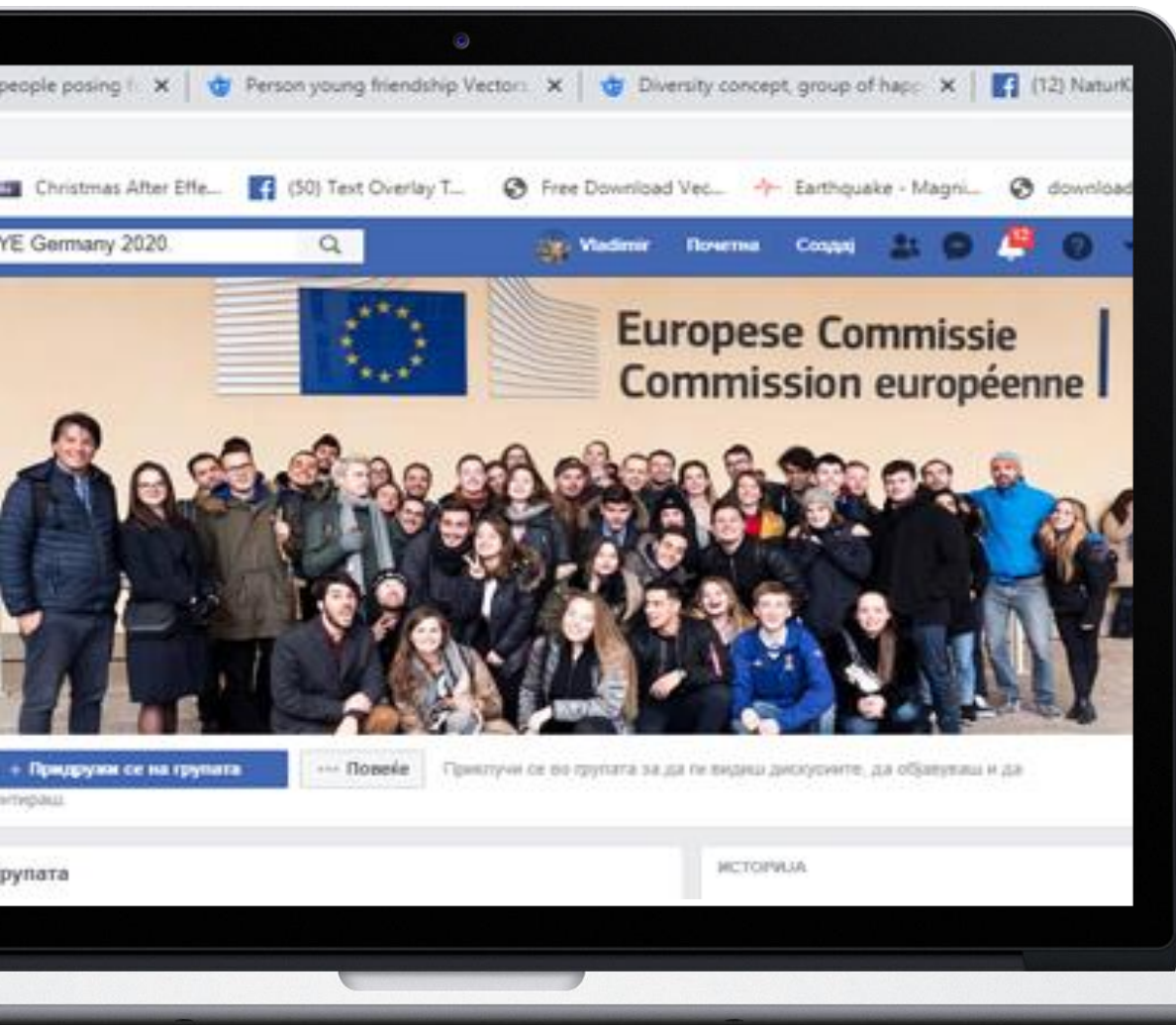
1. **Full participation** in the seminar. I understand that if my participation is not 100% and my absence, for any reason, is not fully justified, I may not receive any reimbursement.
2. I will be responsible for covering any additional costs (**exceeding the given budget**) for my overall travel costs.
3. I will **keep all invoices and proof of travel**, including boarding passes, tickets, etc. and submit them to the host organization in original format as requested by them in a timely fashion.
4. I will **prepare relevant materials** in time for the project activity.
5. I intend to **participate in all evaluation activities** during the project activity and after its completion.
6. I will show **openness and respect** towards other participants and all other individuals involved in the program.
7. I will **respect the rules in the Erasmus+ program guide** that requires participants, facilitators and staff to respect each other's dignity, values, religion and culture, irrespective of race, gender, national or ethnic origin, sexual orientation, age or disability.
8. I will conduct **responsible and moderate behaviour** when it comes to the consumption of alcohol.
9. I will **not bring or use any drugs** (including weed) during my participation on the project activity.
10. I allow the organizers to have **photos and videos taken** of me during the activity and publish these on their websites, social media, promotional material and dissemination material.
11. I will have suitable **health insurance** during the activity of the project - for example a European Health Card (In case of non-EU residents, travel insurance).ⁱ
12. That the days prior or after the mobility I am **traveling on my own risks** and that having insurance is my own responsibility.
13. **Failure to comply** with the above rules and the rules of the project will result in no reimbursement given to me for the project and could also result in me being liable to financial damages as a result of me not following these rules.

I, the undersigned, hereby confirm my participation and agree fully with the above stated.

Date _____ Place _____

Signature _____





**For further questions
don't hesitate to
contact us.
See you soon!**

Aleksandar Čičković
Project Manager

partnerships@naturkultur.eu
+4917687565328